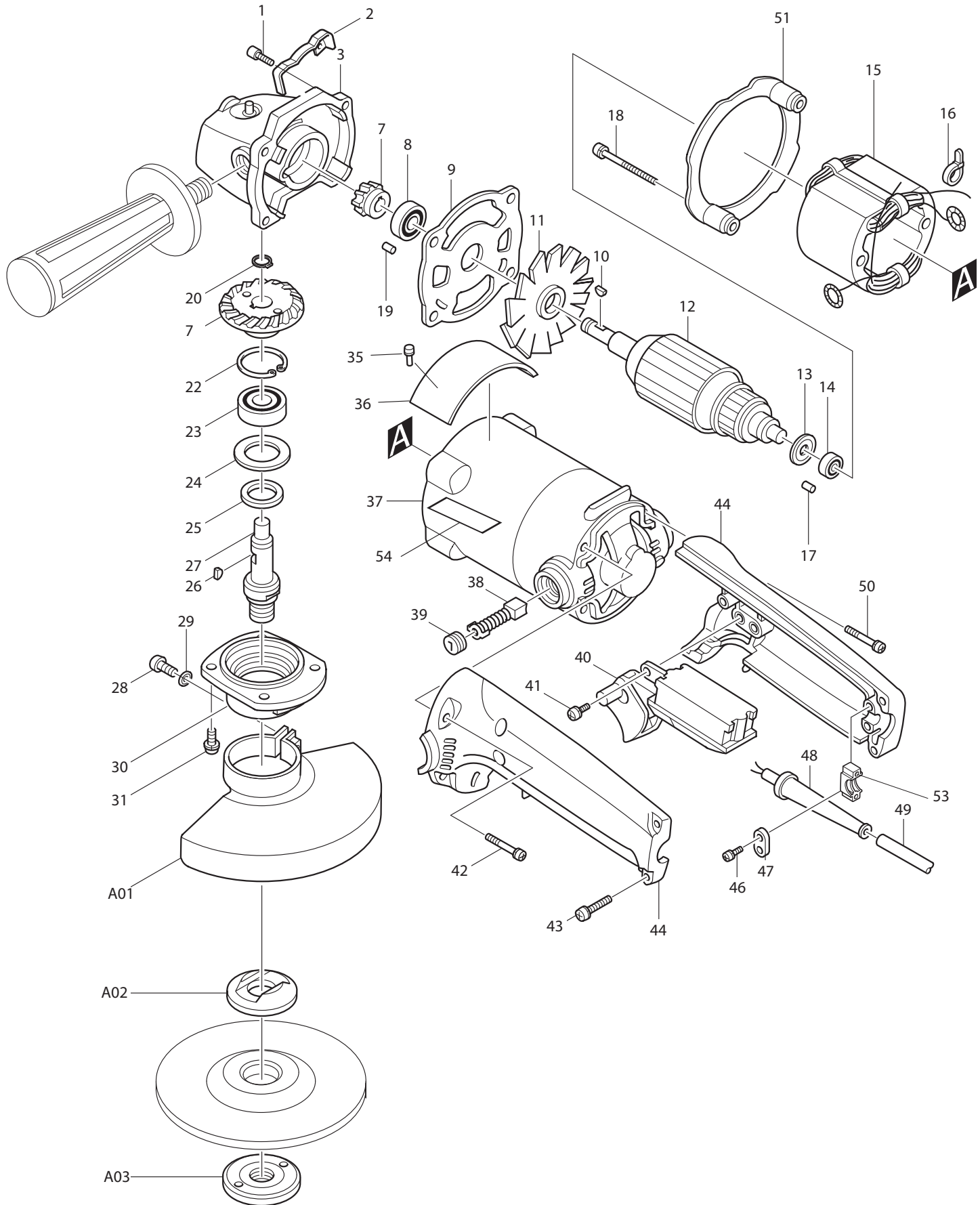




11 - 2010  
9005BZ

# 5" DISC GRINDER, NO LOCK-ON BUTTON



## PARTS LIST

Item No	Type	Part No	Description	Qty	Unit
001	6	266459-3	TAPPING SCREW 5X25	4	PC.
003	3	144196-8	* GEAR HOUSING COMPLETE	1	PC.
003	3	INC.	* Item No. 19		
003	3	INC. 212005-0	* NEEDLE BEARING 810	1	PC.
003	3	INC. 231464-9	* COMPRESSION SPRING 5	1	PC.
003	3	INC. 256616-1	* PIN 5	1	PC.
003	3	INC. 343312-1	* CUP	1	PC.
007	1	181737-9	SPIRAL BEVEL GEAR SET	1	SET
007	2	187603-8	SPIRAL BEVEL GEAR SET	1	SET
008	2	211088-7	BALL BEARING 6000DDW (OLD 211061-7)	1	PC.
009		341681-4	PLATE	1	PC.
010		254002-0	WOODRUFF KEY 3	1	PC.
011		241517-6	FAN 70	1	PC.
012		516091-6	ARMATURE ASS'Y 115V	1	PC.
012		INC.	Item No. 11,13,14		
013		681613-2	INSULATION WASHER	1	PC.
014	2	210005-4	BALL BEARING 608DDW (OLD 211033-2)	1	PC.
015	3	520085-5	FIELD ASS'Y 115V	1	PC.
015	3	INC. 654019-7	RING TERMINAL	2	PC.
015	3	INC. 654555-3	CONNECTOR 34130	2	PC.
016		687010-0	BAND	1	PC.
017		263014-2	RUBBER PIN 4	1	PC.
018	6	266352-1	* TAPPING SCREW 5X65	2	PC.
019		263002-9	RUBBER PIN 4	1	PC.
020		961052-5	RETAINING RING S-12	1	PC.
022		962151-6	RETAINING RING R-32	1	PC.
023	2	211129-9	BALL BEARING 6201DDW (OLD 211106-1)	1	PC.
024	2	267126-3	FLAT WASHER 22	1	PC.
025		443051-4	FELT RING 20	1	PC.
026		254002-0	WOODRUFF KEY 3	1	PC.
027	2	326791-8	* SPINDLE A	1	PC.
028	2	265180-1	* PAN HEAD SCREW M5X16	1	PC.
029		942101-7	SPRING WASHER (OLD)	1	PC.
030	1	315282-4	* BEARING BOX	1	PC.
030	2	319462-4	* BEARING BOX	1	PC.
031	3	266148-0	* HEX. SOCKET HEAD BOLT M4X14	4	PC.
036	2	853V00-9	NAME PLATE F/9005BZ	1	PC.
037	5	153548-2	* MOTOR HOUSING COMPLETE	1	PC.

Item No	Type	Part No	Description	Qty	Unit
037	5	INC.	* Item No. 17		
037	5	INC.	810341-4 * CAUTION LABEL (Added)	1	PC.
037	5-2	INC.	643603-3 * BRUSH HOLDER 6-10 (Old 643609-1)	2	PC.
038	2		194982-7 CARBON BRUSH CB-124 2PC/SET (W/ ORIGIN)	1	SET
038	Opt.		194975-4 AUTO CUT-OFF CARBON BRUSH CB-105 (2PCS/SET)	1	SET
039			643600-9 BRUSH HOLDER CAP 6-10	2	PC.
040			651131-4 SWITCH NO LOCK AC/DC	1	PC.
042	6		266459-3 TAPPING SCREW 5X25	2	PC.
043			911143-2 PAN HEAD SCREW M4X22	3	PC.
044	4		183E62-4 * HANDLE SET, NO HOLE	1	SET
044	4	INC.	421565-3 * SPONGE SHEET	1	PC.
046	3		265A48-7 TAPPING SCREW M4X18	2	PC.
047			687063-9 CORD CLAMP (STRAIN RELIEF)	1	PC.
048	2		682572-3 CORD GUARD 8 (OLD 682503-2)	1	PC.
049			664064-4 CORD W/PLUG 2P-18-2.5M, SJ	1	PC.
050	6		266459-3 TAPPING SCREW 5X25	2	PC.
051			411876-4 BAFFLE PLATE	1	PC.
053			687051-6 CLAMP BASE (SRAIN RELIEF)	1	PC.
054	1		819001-5 MAKITA LABEL, ENG	1	PC.
054	2		819285-5 MAKITA LOGO LABEL, ENG	1	PC.
056			261039-0 URETHANE WASHER 14	3	PC.
100	Opt		191728-2 URETHANE WASHER 14, 3PC/SET (OPTION) (MAKE EASY REMOV	1	SET
A01	3		135549-2 * WHEEL COVER ASS'Y F/5"	1	PC.
A01	3	INC.	Item No. 28		
A01	4		123099-9 * WHEEL COVER ASS'Y F/5" (H:46MM)	1	PC.
A01	4	INC.	213009-5 * O RING 4		
A01	4	INC.	* Item No. 28		
A02	1		224361-6 INNER FLANGE 82	1	PC.
A02	3		224378-9 INNER FLANGE 45	1	PC.
A02	4		224399-1 INNER FLANGE 45	1	PC.
A03	1		224509-0 LOCK NUT 5/8-40	1	PC.
A03	3		224568-4 LOCK NUT 5/8-45	1	PC.
A04			152492-0 GRIP 36 COMPLETE	1	PC.
A05	1		741407-B 5" DEPRESSED CENTER WHEEL A24P	1	PC.
A05	2		D-20797 5" ABRASIVE DEPRESSED CENTRE WHEEL A24R	1	PC.
A05	3		A-95962-25 5" D.C.G.W WA36N 25/PK	1	SET
A06	2		782424-9 LOCK NUT WRENCH 28	1	PC.
A07			743015-1 RUBBER PAD F/ 5" (F/ ABRESIVE DISC)	1	PC.
A09			193048-0 SANDING LOCK NUT 5/8-48	1	PC.

Item No	Type	Part No	Description	Qty	Unit
A10	2	123850-7	CUT-OFF WHEEL GUARD ASSY F/5"	1	PC.
A10	3	122911-0	* CUT-OFF WHEEL GUARD F/5"	1	PC.
A11	1	196587-9	* DUST COLLECTION COVER 5" - Parts Breakdown #196587-9	1	PC.
A11	2	196575-6	* DUST COLLECTION COVER 4-1/2-5" - See Parts Breakdown #196575-	1	PC.
A11	3	1911K3-9	DUST COLLECTION COVER F/ 4-1/2" - 5" DMND CUP WHEEL	1	PC.
A12	2	196845-3	* DUST COLLECTION COVER 5" DMND, TUCKPOINT BLADE	1	PC.
A13		B-38532	5" 2IN1 ABRASIVE DISC A36T	1	PC.
D01		652014-1	P.H.SCREW M4X8 (F/ SWITCH)	4	PC.
D02	3	654113-5	* SOLDERLESS EYE TERMINAL 1.25-M4 (F/ SWITCH)	2	PC.
D03		654532-5	* TERMINAL BLOCK (ADDED)	1	PC.
E05		689054-6	RING TERMINAL RETAINER 13 (Added)	2	PC.

**SERVICE CHANGE**

**1. Service Change On Motor Housing Com., Screw**

Item No.	Description	MCT prod			MJ prod	MCA Prod
		Type 1	Type 2	Type 3	Type 4	Type 5
1	SCREW 5X25	911241-2 (P.H)	266041-8 (Tapping)		911241-2 (P.H)	266041-8 (Tapping)
18	SCREW 5X65	911290-9 (P.H.)	266029-8 (Tapping)		911290-9 (P.H.)	266029-8 (Tapping)
37	MOTOR HOUSING	156734-4	153455-9	153548-2	140102-1 (N/A)	153548-2
42	SCREW	911248-8 (P.H.M5X28)	266041-8 (Tapping 5X25)		911248-8 (P.H.M5X28)	266041-8 (Tapping 5X25)
50	SCREW	911248-8 (P.H.M5X28)	266041-8 (Tapping 5X25)		911248-8 (P.H.M5X28)	266041-8 (Tapping 5X25)

Above Parts Are Interchangeable As A Set.

**2. Service Change On Gear Housing, Tool Rest, Etc.**

(T/I# B3707)

Item No.	Description	Type 1	Type 2	Type 3	Type 4
3	GEAR HOUSING	156735-2 (N/L/A)	159710-7		144196-8
2	TOOL REST	341680-6	N/A		
31	SCREW	911121-2 (P.H.M4X14)	266034-5 (Tapping CT 4X16)	266148-0 (Hex Bolt M4X14)	

Above Parts Are Interchangeable As A Set.

**3. Service Change On Handle, Strain Relief, Etc.**

(T/I# 97189)

(T/I# B3707)

Item No.	Description	Type 1	Type 2	Type 3	Type 4
44	HANDLE (L)	183251-1 SET	183253-7 SET	187582-0 SET	183E62-4 SET
52	HANDLE (R)				
D02	TERMINAL	654002-4 (4PC)	654113-5 (4PC)	654113-5 (2PC)	654113-5 (2PC)
D03	TERMINAL BLOCK	-----		654532-5	654532-5

Above parts are interchangeable as a set.

See T/I# 97189 For Wiring Changes

**5. Changes on Wheel cover, etc.**

(TI#68249)

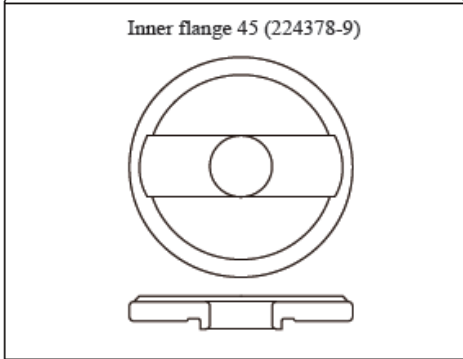
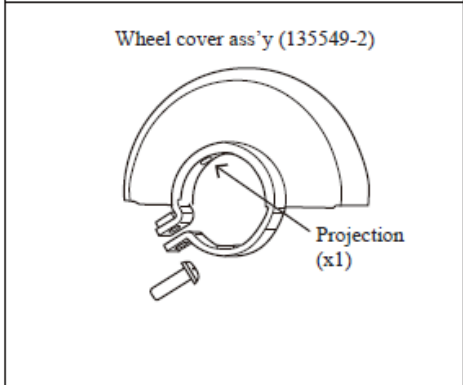
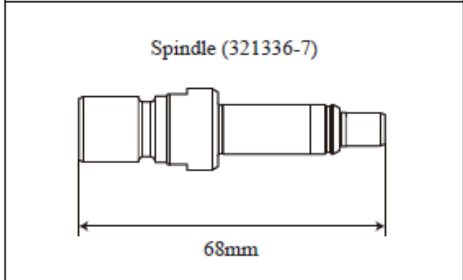
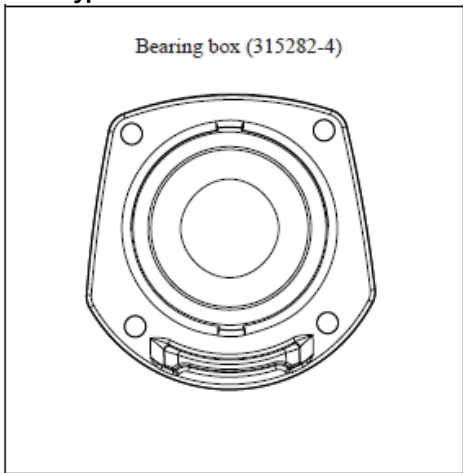
(TI#B3707)

Item No.	Description	Type 2	Type 3	Type 4
27	Spindle > Spindle A	321336-7		326791-8
28	+Pan Head Screw M5X16 > Pan Head Screw M5X16	251259-4		265180-1
30	Bearing Box	315282-4		319462-4
A01	Wheel Cover Ass'y F/5"	135040-0	135549-2	123099-9
	INC. O Ring 4			213009-5
A02	Inner Flange 82 > 45	224361-6	224378-9	224399-1
A03	Lock Nut 5/8-40 5/8-45	224509-0	224568-4	
A10 Opt.	COW Wheel Cover Assy	122688-7 or 123850-7		122911-0
A11 Opt.	Dust Collection Cover	196587-9		196575-6
A12 Opt.	Dusct Collection Cover F/Diamond & Tuckpoint Blade	192188-1		196845-3

\*Component of A01

Above parts are completely interchangeable as a set.

**Type 3**



**Type 4**

